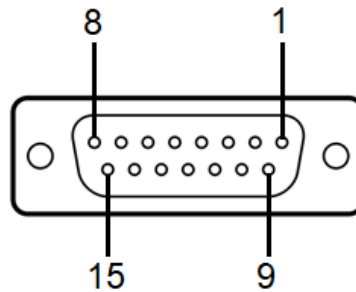


## Pinbelegung WTC676



Pin am SUB-D	Pin am FUG	Name
1	-	Power Plus 12/24 V
2	-	Power Minus
6	9	Mute
7	11	DUMB Sel1
9	10	DUMB Sel2
10	12	DUMB Sel0
14	15	Audio Out 100 mV/1000 Ohm
15	16	Mic+
11	14	Option 2
13	13	Option 1 PTT
3	4	USB+
4	5	USB-
5	6	USB Power
8	19/20	AGND